

RoboMon NT/2000 - Cluster Server Intelligent Solution Set

Automated management for Microsoft Cluster Server

Manage Any Cluster Server Environment Better

RoboMon's Cluster Server Intelligent Solution Set provides easily configurable proactive monitoring and problem solving for environments with any number of clustered server pairs. This substantially augments the reliability and failover protection of Cluster Server technology, an advantage particularly crucial for growing eBusiness operations. RoboMon's automated, out-of-the-box Cluster Server Intelligent Solution Set operates through an integrated set of rules that detect and correct problems before your users experience failures or slow-downs. It monitors all aspects of Cluster Server availability and performance, including:

- Basic operations, such as network availability, critical service operation, and availability of cluster resources, and
- Performance criteria, such as CPU, memory and I/O bottlenecks.

RoboMon can diagnose and correct problems on the spot, or escalate them to your attention at a central monitoring location.

Key Benefits

- Works out of the box, with no setup time
- Fixes problems automatically, focuses your staff's time on the issues you target
- Allows centralized monitoring of remote systems
- May be precisely customized for each environment
- Provides intuitive, graphical interface for management and customization
- Integrates with RoboMon's enterprise-wide total eBusiness infrastructure management solution (see below)

What RoboMon's Cluster Server Intelligent Solution Set Monitors

RoboMon's Cluster Server Intelligent Solution Set provides comprehensive monitoring and management of running Cluster Server systems. Specific rules are designed to:

- Monitor whether the Cluster Server service is running, and optionally restart it
- Track basic performance indicators, including CPU usage, I/O, and physical memory usage, alerting you to potential performance degradation and providing recommendations for improving performance
- Report when any of the cluster's nodes or resource groups are down and have not failed over, and optionally restart them, minimizing the amount of time that resources are unavailable to users
- Keep an eye on the availability of the cluster's internal network and the local LAN, alerting you to problems that may slow or prevent user access to cluster resources

What Rules Mean to You

RoboMon rules work out-of-the-box, with no tweaking, for any size Cluster Server configuration. In addition, each RoboMon rule may be completely customized, allowing precise control over threshold settings through the Solutions Manager, as well as actions to be taken, required notifications and alerts. RoboMon's intuitive, graphical Rule Designer allows you to tailor rules and create new rules without writing a single line of code. Customized rules may be deployed to individual machines, domains or throughout the enterprise, via simple, efficient, drag & drop operations in the RoboMon Enterprise

RoboMon NT/2000 Event Monitor

The screenshot shows the RoboMon Event Monitor application window. The title bar reads "Robomon Event Monitor - All Events for RoboMon Event Database on \\BASE". The menu bar includes "File", "Monitor", "View", "Event", "Detail", "Tools", and "Help". Below the menu bar is a toolbar with icons for opening problems, printing, and other functions. The main area contains a table of events:

EventDateTime	Class	SubClass	Computer	Severity	Alert	RuleName
10/28/99 04:02:58 PM	CLUSTER SER...	NODE_AVAILABIL...	SALES	1	!	NODE_STATUS
10/28/99 04:00:18 PM	AUTOMATION	NETWORK	EAST	1	!	UNREACHABLE_COMPUTERS
10/28/99 04:00:18 PM	AUTOMATION	NETWORK	EAST	1	!	UNREACHABLE_COMPUTERS
10/28/99 02:01:32 PM	IIS	IIS CACHE	GLOBAL	1	!	IIS_CACHE_ALERT
10/28/99 02:01:28 PM	IIS	IIS PROCESS	GLOBAL	1	!	IIS_PROCESS_POOL_LEAK
10/27/99 11:00:09 PM	AUTOMATION	PAGE_FILE	EAST	1	!	PAGE_FILE_LOAD
10/27/99 11:00:01 PM	IIS	IIS SERVICES	EAST	1	!	IIS_SERVICES

Below the table, there is a detailed view of the selected event. The text reads:

Updated severity 1 problem for computer SALES at 10/28/99 04:02:58 PM.
Generated by rule NODE_STATUS of type NODE_AVAILABILITY in CLUSTER SERVER.

Cluster node TWIN1 in cluster SALES is currently "DOWN".

At 04:00:48 on 10/28/99, cluster node TWIN1 in cluster SALES reported a status of "DOWN". Until this node is returned to a status of "Up", the remaining active node will be required to absorb the full cluster load, and performance may be severely degraded.

The status bar at the bottom shows "Ready", "7 events", and the time "10/28/99 4:15:26 PM".

The Total RoboMon Solution

RoboMon for Windows NT/2000 is automated eBusiness infrastructure management software that detects and corrects complex application, system and network problems to ensure the highest levels of availability and performance.

RoboMon includes a suite of pre-defined rules, called Intelligent Solution Sets, that work out of the box to detect and correct problems with applications, systems and networks, including Windows NT/2000, Microsoft BackOffice, and SNMP-based network components.

RoboMon may be configured to notify staff of problems in real time, or to take corrective action independently and monitor the results for success. RoboMon's many notification options include paging, e-mail, SNMP trap, net send messages, and centralized event reporting through the Event Monitor, enabling it to integrate with and supplement your current staff notification practices.

Where RoboMon's Cluster Server Intelligent Solution Set Gets Its Data

- Cluster Server API

RoboMon's Cluster Server Rules

Announce_ClusterServer

Announces the start of the rule process.

Cluster_Performance_Checks

Checks some basic performance indicators.

Cluster_Service

Monitors the state of the Cluster Server service.

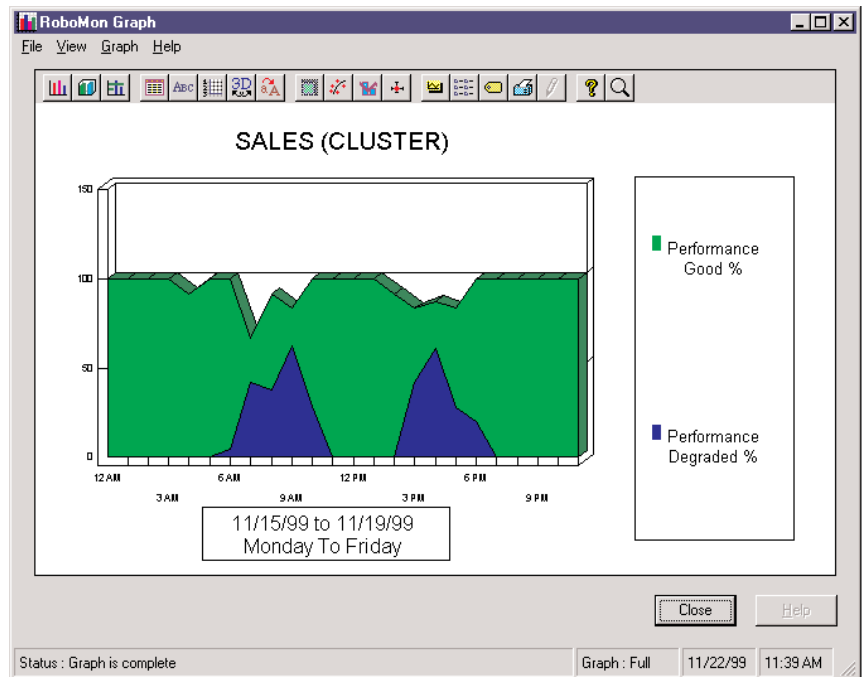
Group_Status

Monitors the status of the cluster's resource groups.

Network_Status

Monitors the availability of networks associated with the cluster, both the local LAN, and the internal, cluster communication only network.

RoboMon NT/2000 Graphing



Node_Status

Raises an alert if a cluster node is detected as down.

Resource_Status

Monitors the status of individual cluster resources.

Restart_Cluster_Service

When fired, automatically restarts the Cluster Server service.

Restart_Group

Attempts to automatically bring offline resource groups online.

Restart_Node

Attempts to automatically restart down nodes, and resume paused nodes.

Microsoft, Windows, and the Windows Logo are registered trademarks of Microsoft Corporation in the United States and/or other countries.

HEROIX
Find it. Fix it. Forget it.
www.heroix.com

Corporate Headquarters

120 Wells Avenue
Newton, MA 02459
tel: 800.229.6500 / 617.627.1550
fax: 617.527.6132 : email: info@heroix.com

Boston ■ New York ■ Atlanta ■ Chicago ■ Dallas ■ San Francisco

Features and support may vary by platform. Heroix Corporation believes that the information in this document is accurate as of its publication date; such information is subject to change without notice. Heroix is not responsible for any inadvertent errors.

Heroix, the Heroix logo, and Heroix eQ are trademarks of Heroix Corporation. All other trademarks are property of their respective owners.

© 2003 Heroix Corporation. All rights reserved.